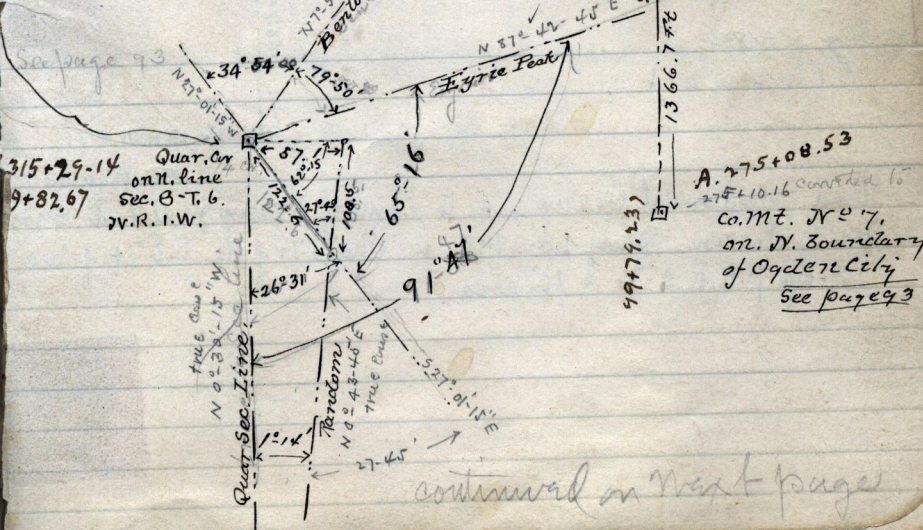


N. Ogden, S. 1002.

2 f. 10
8 f. 10
10 f. 10

1/4 Sec. stn in center of Sec. 8 T-6-N-R-1-W.
old cor.

Scale:



315+29.14 Quar. Cor
9+82.67 on N. line
Sec. 8-T. 6.
N.V.R. 1-W.

A. 275+08.53
275+10.16 converted to
com. M. N. 7,
on N. boundary
of Ogden City
See page 93

continued on next page